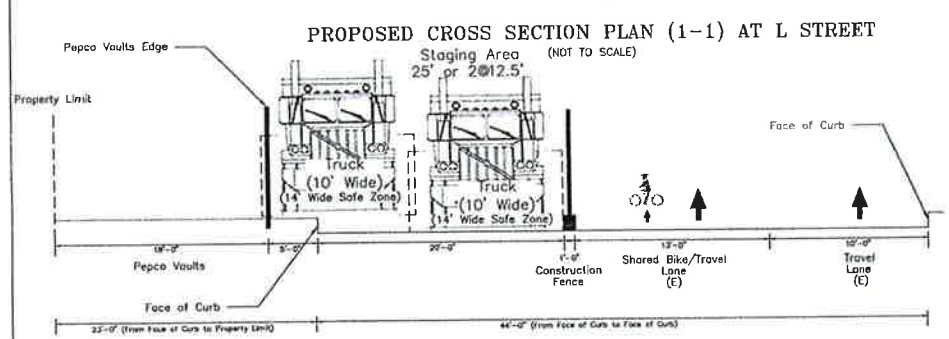
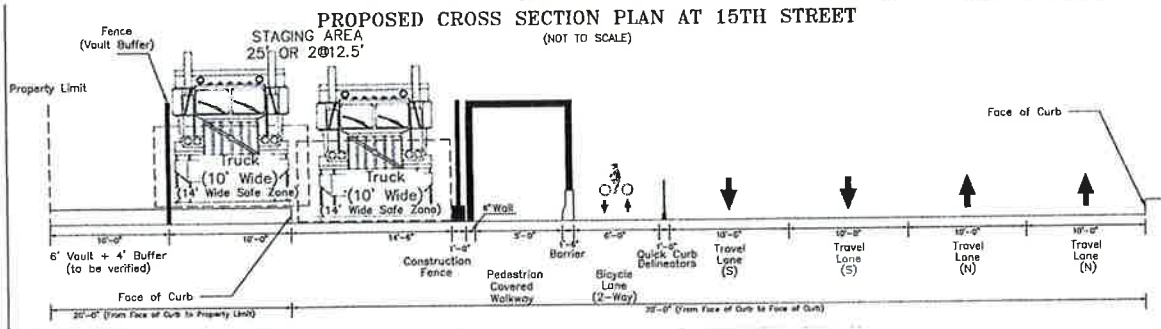


**Traffic Control Plan**  
**1100 15th Street NW**  
**Base Condition**  
**Phase 2 (27 Months)**

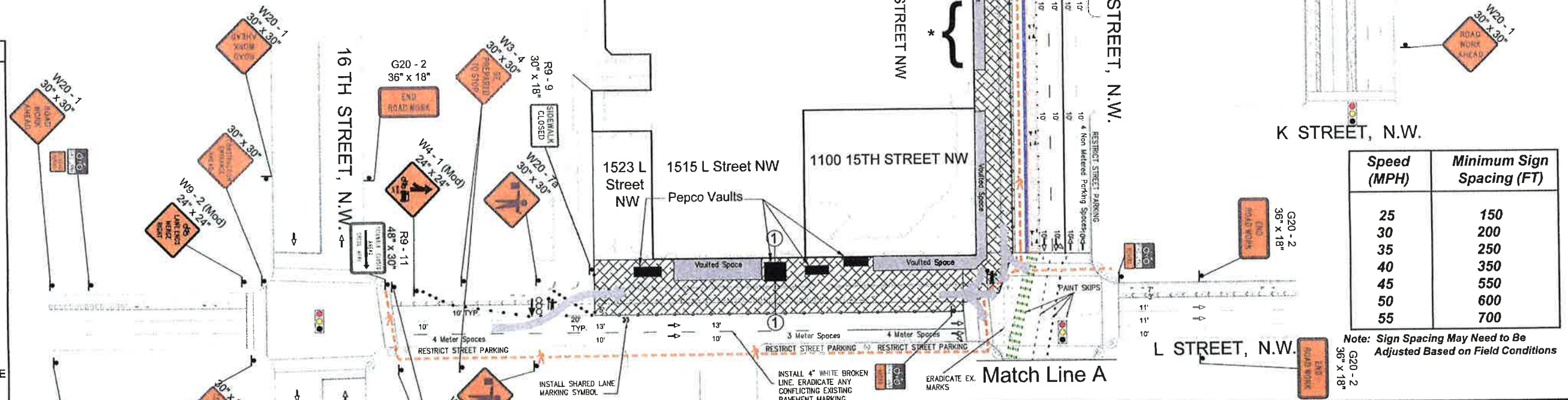
**Total Trucks = 24,300 (Average Range 136/Day - 31/Day)**  
**Trucks Operation 24 Hours 7 Days a Week**



\* 12 Parking spaces to be restricted on the west side of 15th street adjacent to the site.  
 \*\* 3 Parking spaces to be restricted on the west side of 15th street in front of 1152 15th street building.

**LEGEND**

- SIGNALIZED INTERSECTION
- DIRECTION OF TRAFFIC
- PROPOSED BIKE LANE
- CONSTRUCTION STAGING AREA
- BARRIER
- FENCE
- CHANNELIZING DEVICE
- ARROW PANEL
- SIGN
- PEDESTRIAN DETOUR ROUTE
- CONSTRUCTION TRUCKS ROUTE
- FLAGMAN / BID STAFF 7AM TO 7PM
- ON STREET PARKING AREA OFF PEAK HOURS
- FIRE HYDRANT
- TRAFFIC CONTROL CABINET



DDOT/PUBLIC SPACE PERMIT OFFICER/TPS  
 APPROVED with conditions  
 Date: 10/07/2015 Contact: Sean P. P...  
 SEE RESTRICTIONS TOPS COMMENTS on...  
 Dec 01 2015

TRACKING # 10214420

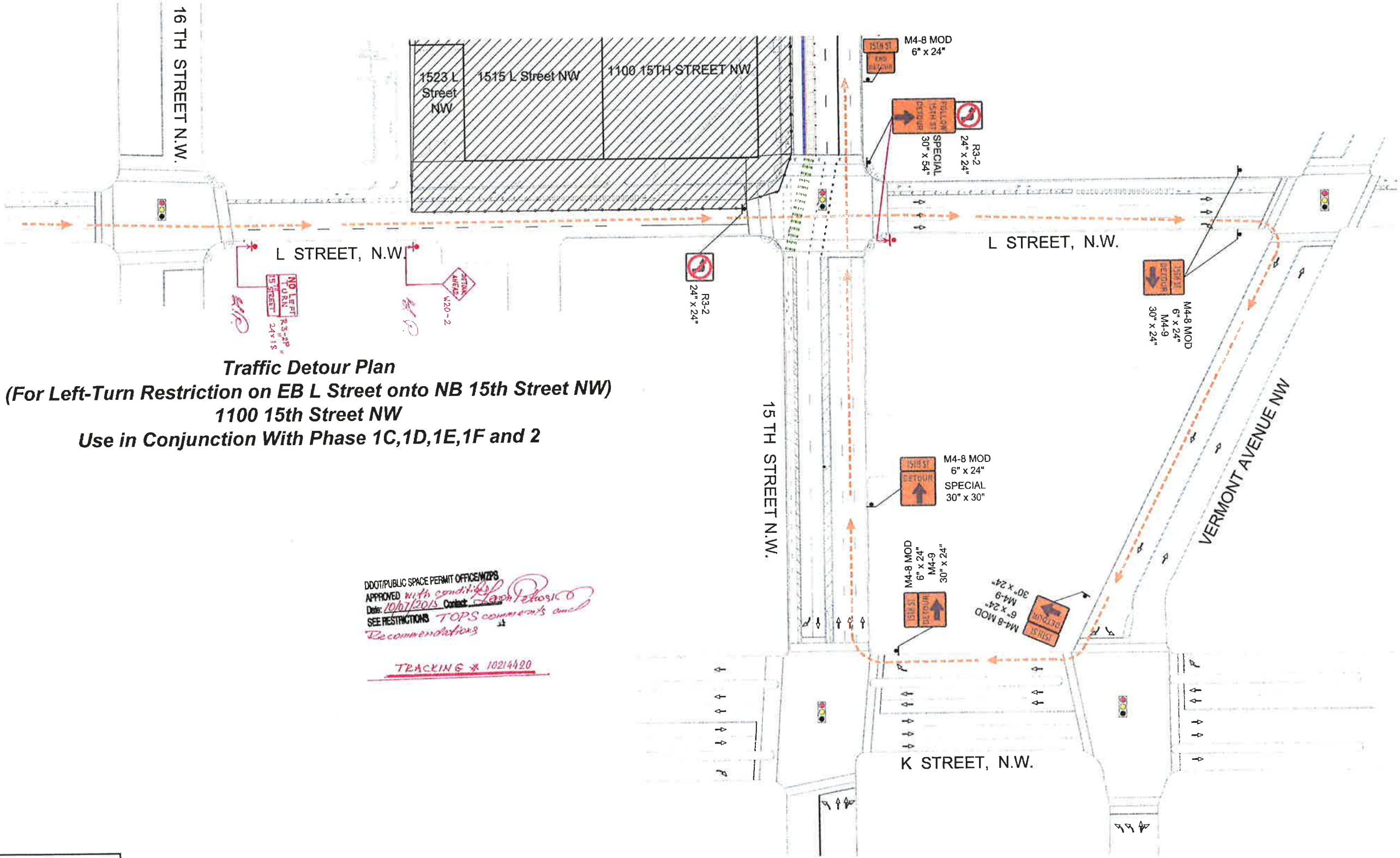
Speed (MPH)	Minimum Sign Spacing (FT)
25	150
30	200
35	250
40	350
45	550
50	600
55	700

Note: Sign Spacing May Need to Be Adjusted Based on Field Conditions

**WA WELLS + ASSOCIATES, INC**  
 1420 Spring Hill Road, Suite 610, McLean, Virginia 22102  
 Phone: 703/917-6820 Facsimile: 703/917-0739

SCALE: 1" = 40'  
 DATE: September 14, 2015  
 DESIGNED BY: LES/CLK  
 DRAWN BY: AHJ  
 CHECKED BY: LES/CLK  
 PROJECT NO: 6360

TITLE: TRAFFIC CONTROL PLAN  
 1100 15TH STREET, N.W.  
 LOCATION/DESCRIPTION: WASHINGTON, D.C.



**Traffic Detour Plan**  
 (For Left-Turn Restriction on EB L Street onto NB 15th Street NW)  
 1100 15th Street NW  
 Use in Conjunction With Phase 1C,1D,1E,1F and 2

DDOT/PUBLIC SPACE PERMIT OFFICE/WZPS  
 APPROVED with conditions  
 Date: 10/07/2015 Contact: Leon Potosico  
 SEE RESTRICTIONS TOPS comments and  
 Recommendations

TRACKING # 10214420

**LEGEND**

- SIGNALIZED INTERSECTION
- DIRECTION OF TRAFFIC
- SIGN
- DETOUR ROUTE
- CONSTRUCTION STAGING AREA



1420 Spring Hill Road, Suite 610, McLean, Virginia 22102  
 Phone: 703/917-8820 Facsimile: 703/917-0739



09/14/15

SCALE: 1" = 40'  
 DATE: September 14, 2015  
 DESIGNED BY: LES/CLK  
 DRAWN BY: AHJ  
 CHECKED BY: LES/CLK  
 PROJECT NO: 6360

REVISIONS:	
DATE	REMARKS

TITLE:  
 TRAFFIC DETOUR PLAN  
 1100 15TH STREET, N.W.  
 LOCATION/DESCRIPTION:  
 WASHINGTON, D.C.